



Central Coast Council

Environment and Planning Committee

**ATTACHMENTS PROVIDED UNDER
SEPARATE COVER**

Tuesday 3 June 2025

Central Coast Council
ATTACHMENTS PROVIDED UNDER SEPARATE COVER to the
Environment and Planning Committee

To be held ,
 2 Hely Street, Wyong
 on Tuesday 3 June 2025
 Commencing at 7:00 PM

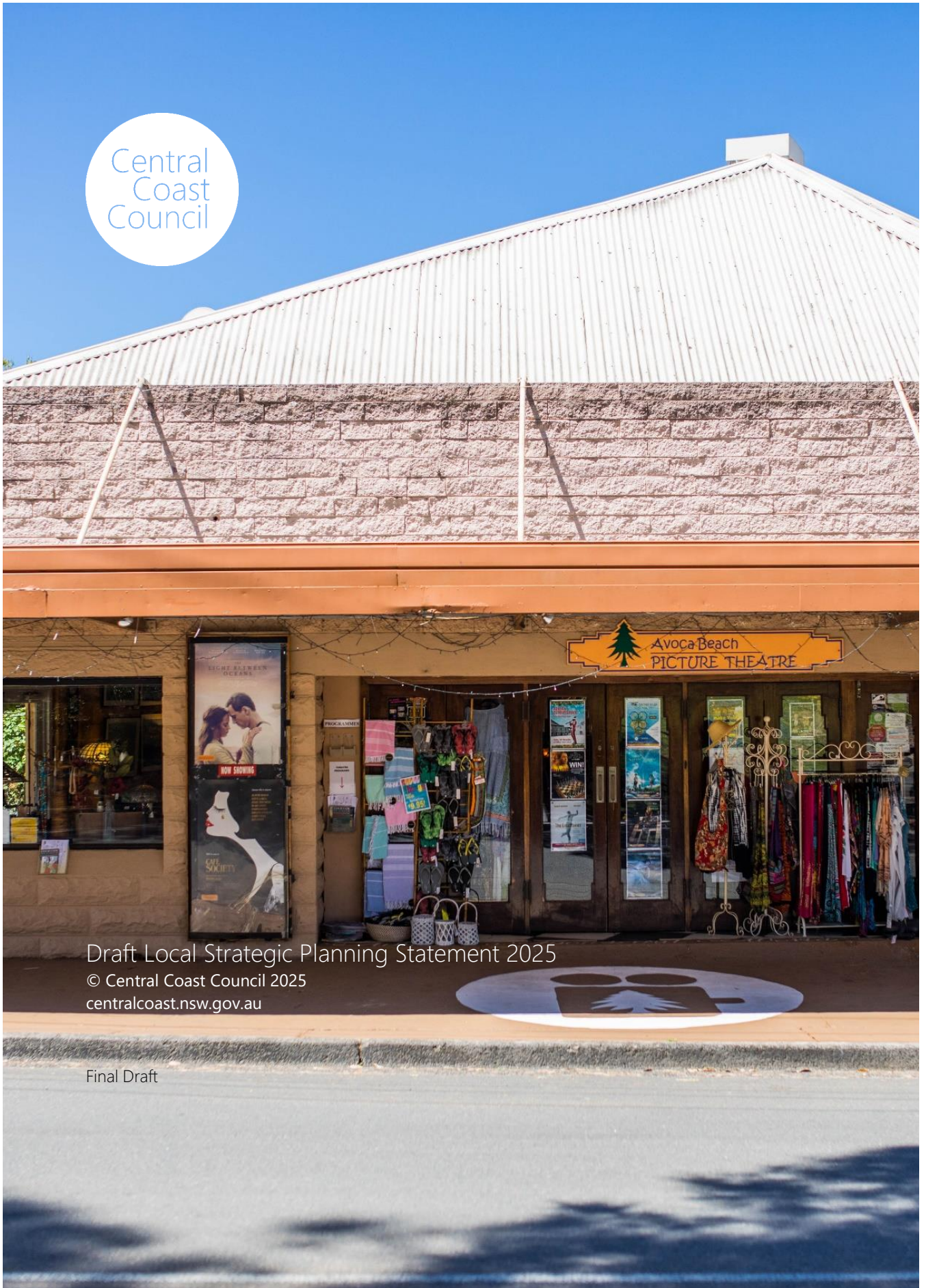
INDEX

1.5	Local Strategic Planning Statement - For Public Exhibition	
	Attachment 1: Local Strategic Planning Statement 2025 - Final Draft.	4
1.6	Draft Open Coast Coastal Management Program - For Public Exhibition	
	Attachment 1: Draft Open Coast Coastal Management Program RevA	87
	Attachment 2: Open Coast Coastal Management Program - Coastal Zone Emergency Action Subplan.....	292
1.7	Land Acquisition - Mannering Park - Shared Pathway	
	Attachment 1: Mannering Park Shared Pathway - Plan Showing Land Acquisition Areas	345
	Attachment 2: Central Coast Bike Plan 2019-2029.....	346
	Attachment 3: Mannering Park Shared Pathway - Your Voice Our Coast Published Content.....	452
	Attachment 4: Confidential Attachment - Estimated Acquisition Costs - Mannering Park.....	458
1.8	Land Acquisition - Davistown Road Saratoga - Road Widening	
	Attachment 1: Plans Showing Proposed Road Widening Affecting 114, 116,118,120 & 122 Davistown Road, Saratoga..	461
	Attachment 2: Community Consultation Letter & Plans sent to Davistown Rd Residents - Proposed Road and Drainage Reconstruction.....	466
	Attachment 3: Confidential Attachment - Estimated Acquisition Costs - Davistown Road Saratoga	473
1.9	Winney Bay - Outcome of Consultation	
	Attachment 1: Winney Bay Clifftop Walk (Stage 2) and Captain Cook Lookout Consultation Report.....	476
1.11	Review of Policy for Asbestos Management	
	Attachment 1: Draft Policy for Asbestos Management.....	564

Central Coast Council



LSPS Draft Local Strategic
Planning Statement
2025



Draft Local Strategic Planning Statement 2025
© Central Coast Council 2025
centralcoast.nsw.gov.au

Final Draft

Contents

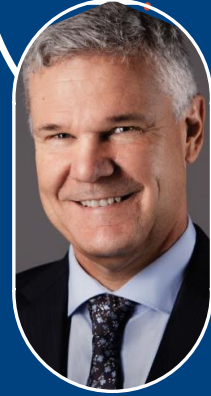
Message from the.....	1
Chief Executive Officer	Error! Bookmark not defined.
Acknowledgement of Country.....	3
Introduction.....	4
What is a Local Strategic Planning Statement?	5
What is the Central Coast Regional Plan 2041?	5
What is the Community Strategic Plan 2025?.....	5
How to read the LSPS.....	6
One Region.....	8
Our Community Strategic Plan	9
Our LSPS Framework	9
Strategic Context	10
Land Use on the Coast.....	11
Our Coast Profile.....	12
Our Future.....	13
20 Year Vision	14
LSPS at a glance	16
Community Insights.....	18
Community Insights 2020.....	19
What's Changed?	20
The Liveability Census	21
Drivers of Change.....	22
Changing Households and Cost of Living	23
Climate Change and Sustainability.....	24
New Urban Ways of Living	25
Evolving Employment and Industries	26
City Shaping and Major Infrastructure.....	27
Councillor Priorities.....	28
Region Statements.....	29
Key Enabling Projects.....	42

Place Statements.....	43
Planning Areas	44
Place Statement.....	46
Mountains and Valleys.....	46
Place Statement.....	50
Peninsula	50
Place Vision	50
Place Statement.....	54
Gosford Central.....	54
Place Statement.....	58
East Brisbane Water and Coastal	58
Place Statement.....	62
Narara Valley and Ourimbah	62
Place Statement.....	65
Southern Lakes.....	65
Place Statement.....	68
Wyong, Warnervale and Gorokan	68
Place Statement.....	72
Northern Lakes.....	72
Implementation.....	74

Mayor's Message



Message from the CEO





Acknowledgement of Country

Acknowledgement of Country

We acknowledge the Traditional Custodians of the land on which we live, work and play.

We pay our respects to Darkinjung country, and Elders past and present. We recognise the continued connection to these lands and waterways and extend this acknowledgement to the homelands and stories of those who also call this place home. We recognise our future leaders and the shared responsibility to care for and protect our place and people.



What is a Local Strategic Planning Statement?

The Local Strategic Planning Statement 2025 (LSPS 2025) provides the strategic roadmap for a changing Central Coast Region. It sets a clear land use vision for the future, that responds to the unique qualities of our region and the evolving needs of our local community. The LSPS provides guidance on land use planning decisions through planning principles and associated actions, to help inform future strategic plans and policies, and deliverables for Council's Delivery Programs and Operational Plan.

The desired outcomes of the LSPS will enable Council to undertake meaningful discussions with community, industry, and other government agencies as to how development, business, investment and infrastructure is planned, managed and delivered while preserving the Central Coast's environment and unique character.

Council has a legal obligation under the *Environmental Planning and Assessment Act 1979* (the Act) to deliver a LSPS and a Community Strategic Plan, which together guide the long term social, environmental and economic aspirations of the community. The LSPS25 also aligns with the opportunities and directions outlined in the NSW State Government's Central Coast Regional Plan 2041, and identifies how we intend on delivering better outcomes for our community. Section 3.9 of the Act requires Councils to outline the basis for strategic planning, identified planning priorities, proposed actions, and monitoring and reporting pathways.

What is the Central Coast Regional Plan 2041?

The regional plan is a 20-year land use plan prepared by the NSW Government under the *Environmental Planning and Assessment Act 1979* (EP&A Act) and guides how the region can become a healthy, sustainable, and thriving place for everyone, with a strategic approach to greater housing diversity and affordability.

The regional plan and the LSPS have common interests and intent. Without duplicating effort, the distinctive features are the consideration and alignment with other Council strategies, and identification of Council's actions and planning principles.

What is the Community Strategic Plan 2025?

The Community Strategic Plan 2025, updated in parallel to the LSPS, is a 10-year plan that was developed through community engagement to help set the goals and strategies to achieve the communities desired vision. The LSPS responds to goals and directions of the CSP and presents a strategic land use direction for the Central Coast.

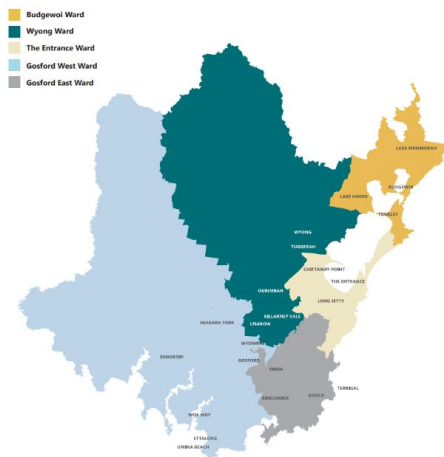
How to read the LSPS

There are five parts to the LSPS:

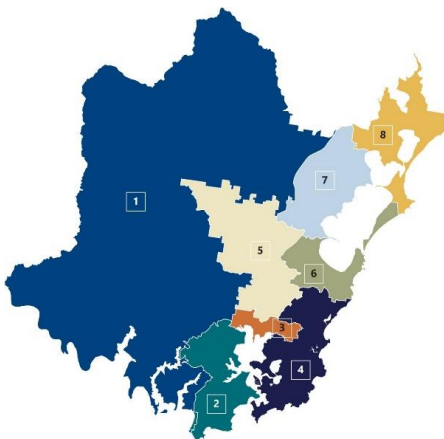
1. 20 Year Vision
The overarching message about the desired future direction of the Central Coast Region, informed by ongoing community consultation. Provides for a 20-year planning horizon.
2. Strategic Context
The makeup of our community, previous local insights, and the major changing trends that will drive decision-making across our region.
3. Region Statements
Statements that identify planning issues which affect *everyone* or at least a large majority of people in the region. Guided by State planning and the themes of the Central Coast Community Strategic Plan 2025.
4. Ward Statements
Statements that identify a broad overview of planning issues which affect a singular Council Ward. Aligned to the local electoral boundaries within the Central Coast. There are five Council Wards in the region.
5. Place Statements
Statements that identify planning issues which affect a singular Planning Area. These are more fine-grained areas aligned to statistical boundaries of the national census. There are eight Planning Areas in the region.



Central Coast Region
Local Government Area



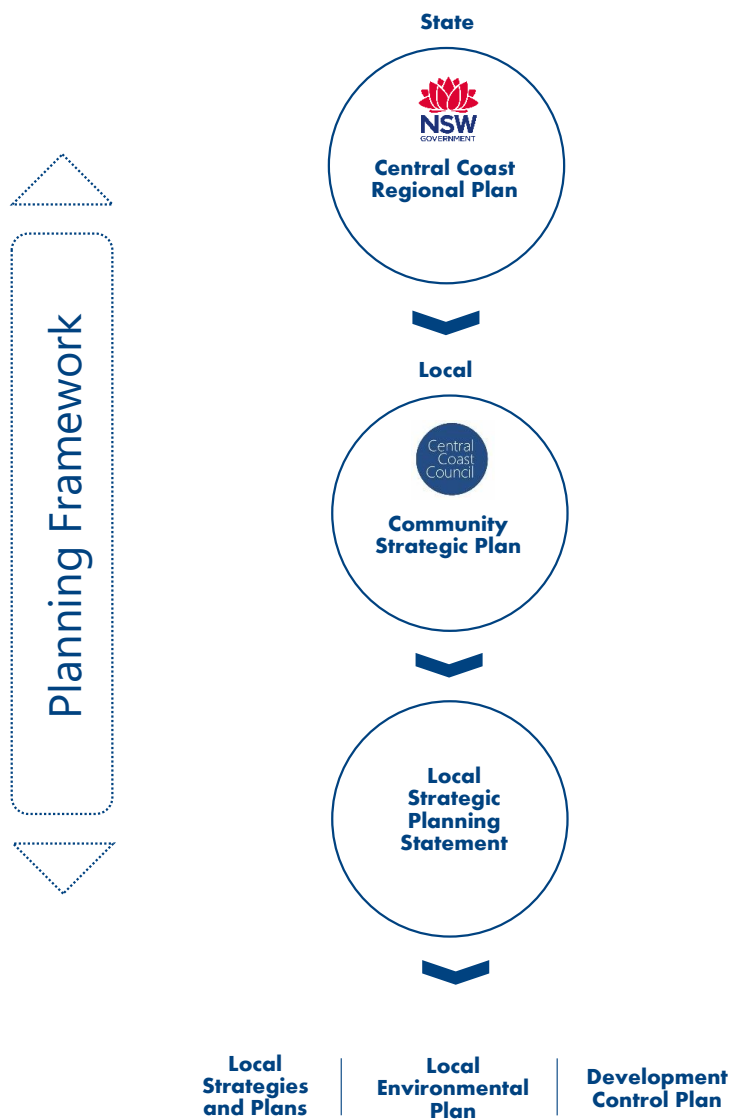
Council Wards
Electoral Boundaries



Planning Areas
ABS Statistical Boundaries

One Region

The Central Coast region is unique in that one local government area spans the entire region. The Central Coast Regional Plan 2041 establishes the top-down strategic direction for the region. The Local Strategic Planning Statement focuses on local planning considerations, informed by local strategies and plans, and consultation with the local community to ensure regional and local objectives align and meet community needs.



The regional plan is a 20-year land use plan prepared under the *Environmental Planning and Assessment Act 1979* (EP&A Act) and guides how the region can become a healthy, sustainable and thriving place for everyone, with a strategic approach to greater housing diversity and affordability.

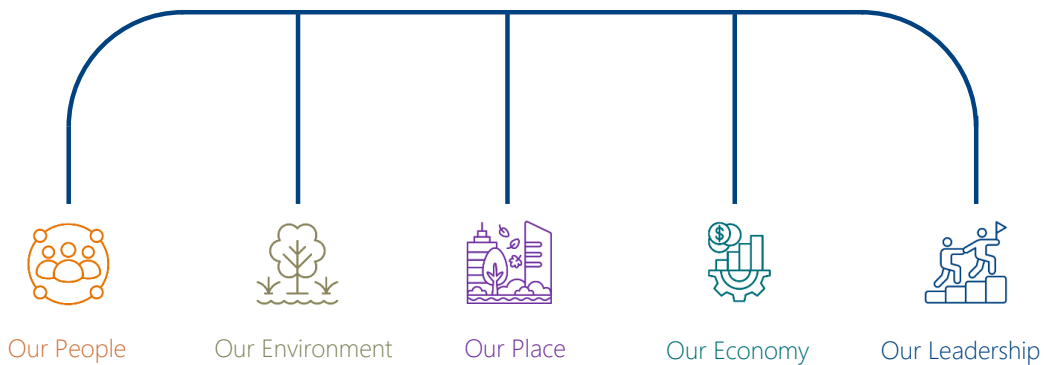
The Draft Community Strategic Plan 2025, updated in parallel to the LSPS, is a 10-year plan that was developed through community engagement to help set the priorities and activities to achieve the communities desired visions and outcomes.

The Local Strategic Planning Statement focuses on local planning and land use, informed by local strategies and plans, and consultation with the local community to ensure regional and local objectives align and meet community needs.

Our Community Strategic Plan

The Community Strategic Plan (CSP) is a ten-year plan that outlines the community's priorities, vision, and aspirations for the future of the Central Coast. The CSP serves to guide all other Council plans and decision-making processes, to ensure all progress and development links back to our community's aspirations.

CSP 2025 Themes



Our LSPS Framework

The LSPS is informed by the Community Strategic Plan, which identifies the main priorities and aspirations of the Central Coast community. The LSPS framework guides planning and development, to assist decision making in land use matters.

The five themes of the CSP; people, land, place, economy and leadership are echoed across this document and guide its structure.

The planning priorities, region statements and place statements under each of these themes have been developed through community engagement, guiding research on economic trends and socio-demographic changes, both specific to the Central Coast LGA, and the broader economic and political climate.

The planning actions have been developed through consultation with Council staff, engagement with community members, and alignment with other Council and State Government strategic documents, particularly the Central Coast Regional Plan 2041. These actions are Council's commitment to our community to ensure we align with the themes, principles and actions outlined in the LSPS.

Strategic Context



As New South Wales increases in population, regional cities across the state will provide a greater role in delivering services, transport, and housing to the community.

The Central Coast is strategically positioned between Greater Sydney and Greater Newcastle to meet the needs of NSW communities.

