



ENVIRONMENT AND PLANNING COMMITTEE

SUPPLEMENTARY BUSINESS PAPER

02 September 2025

Meeting Notice

**The Environment and Planning Committee
of Central Coast Council
will be held in Function Room 2,
2 Hely Street, Wyong,
on Tuesday 2 September 2025 at 5:30pm,
for the transaction of the business listed below:**

1 SUPPLEMENTARY

- 1.6 SUPPLEMENTARY ATTACHMENTS Somersby and Kariong Catchments Overland
Flood Study - For Public Exhibition.....3
- S.1 SUPPLEMENTARY REPORT AND ATTACHMENTS Community Participation Plan -
For Adoption - Deferred from Ordinary Council Meeting 26 August 2025..... 353

Deputy Mayor Doug Eaton OAM
Chairperson



Central Coast Council

**SOMERSBY AND
KARIONG CATCHMENTS
OVERLAND FLOW FLOOD
STUDY**

July 2025



Somersby and Kariong Catchments Overland Flood Study

Draft Flood Study Report

Prepared for:
CENTRAL COAST COUNCIL
2 Hely Street
Wyong NSW 2259, Australia

Prepared by:
Kellogg Brown & Root Pty Ltd
ABN 91 007 660 317
Eora Country
Level 13, 201 Kent Street | Sydney NSW 2000 | Australia
GPO Box 1618 | Sydney NSW 2001 | Australia

29 July 2025

SEW353-TD-WR-REP-0001 Rev F

© Kellogg Brown & Root Pty Ltd, 2025

Limitations Statement

The sole purpose of this report and the associated services performed by Kellogg Brown & Root Pty Ltd (KBR) is to present the basis of design in accordance with the scope of services set out in the contract between KBR and Central Coast Council ('the Client'). That scope of services was defined by the requests of the Client, by the time and budgetary constraints imposed by the Client, and by the availability of access to the site.

KBR derived the data in this report primarily from Central Coast Council supplied information. The passage of time, manifestation of latent conditions or impacts of future events may require further exploration at the site and subsequent data analysis, and re-evaluation of the findings, observations and conclusions expressed in this report.

In preparing this report, KBR has relied upon and presumed accurate certain information (or absence thereof) relative to existing infrastructure provided by government officials and authorities, the Client and others identified herein. Except as otherwise stated in the report, KBR has not attempted to verify the accuracy or completeness of any such information.

No warranty or guarantee, whether express or implied, is made with respect to the data reported or to the findings, observations and conclusions expressed in this report. Further, such data, findings, observations and conclusions are based solely upon Council supplied information and site inspection in existence at the time of the investigation.

This report has been prepared on behalf of and for the exclusive use of the Client and is subject to and issued in connection with the provisions of the agreement between KBR and the Client. KBR accepts no liability or responsibility whatsoever for or in respect of any use of or reliance upon this report by any third party.

COPYRIGHT NOTICE

This document, Somersby and Kariong Catchments Overland Flood Study (2025), is licensed under the Creative Commons Attribution 4.0 Licence, unless otherwise indicated.

Please give attribution to: © Kellogg Brown & Root Pty Ltd, 2025

We also request that you observe and retain any notices that may accompany this material as part of the attribution.

Notice Identifying Other Material and/or Rights in this Publication:

The author of this document has taken steps to both identify third-party material and secure permission for its reproduction and reuse. However, please note that where these third-party materials are not licensed under a Creative Commons licence, or similar terms of use, you should obtain permission from the rights holder to reuse their material beyond the ways you are permitted to use them under the Copyright Act 1968. Please see the Table of References at the rear of this document for a list identifying other material and/or rights in this document.

Further Information

For further information about the copyright in this document, please contact:

Central Coast Council

PO Box 20 Wyong NSW 2259

Daniel.Obrien@centralcoast.nsw.gov.au

02 4306 7900

DISCLAIMER

The Creative Commons Attribution 4.0 Licence contains a Disclaimer of Warranties and Limitation of Liability. In addition: This document (and its associated data or other collateral materials, if any, collectively referred to herein as the 'document') were produced by KBR for Central Coast Council only. The views expressed in the document are those of the author(s), and do not necessarily represent the views of Central Coast Council. Reuse of this study or its associated data by anyone for any other purpose could result in error and/or loss. You should obtain professional advice before making decisions based upon the contents of this document.

Revision History

Revision	Date	Comment	Signatures			
			Originated by	Checked by	Technical Approval	Project Approval
A	19/10/23	Issued for Comment	M Adam	N/A	N/A	J Brown
B	11/01/24	Issued for Comment	T Ward	N/A	N/A	J Brown
C	16/02/24	Issued for Comment	T Ward	N/A	N/A	J Brown
D	29/05/24	Issued for Comment	T Ward	N/A	N/A	J Brown
E	31/01/25	Issued for Comment	T Weston	N/A	N/A	J Brown
F	20/05/25	Issued for Comment	M Samarappulige	S Drysdale	J Eggleton	J Brown
G	29/07/25	Issued for Comment	T Ward	A Voutsis	J Eggleton	J Brown



Contents

Section	Page
LIST OF ACRONYMS	XII
GLOSSARY	XIII
EXECUTIVE SUMMARY	XVII
1 INTRODUCTION	19
1.1 The Floodplain Management Process	19
1.2 Study Objectives	20
1.3 Report Structure	20
1.4 Study Area Description	21
2 COMPILATION AND REVIEW OF AVAILABLE DATA	25
2.1 Review of Previous Studies/Investigations	25
2.1.1 Kariong Trunk Drainage Review - Willing and Partners Consulting Engineers – July 1985	25
2.1.2 Kariong Trunk Drainage Upgrading - Willing and Partners Consulting Engineers – September 1986	27
2.1.3 Project 99 - Kariong Northern Basin System - Nichols, Watts and Associates Pty. Ltd. - November 1987	27
2.1.4 Kariong Upper Catchment Drainage – Willing and Partners Consulting Engineers – May 1990	28
2.1.5 South Somersby Trunk Drainage Study – Kinhill Engineers Pty Ltd – July 1990	28
2.1.6 Somersby Drainage Study – Gutteridge Haskins & Davey – November 1994	29
2.1.7 Kariong Area Drainage Study – AWT Engineering – January 2003	29
2.1.8 Updated Narara Creek Flood Study – Golder – July 2018	30
2.1.9 Brisbane Water Estuary Catchments Overland Flood Study – Cardno – May 2021	30
2.2 Topographic Data	30
2.3 GIS Data	36
2.4 Stormwater Drainage Network and Hydraulic (Cross-Drainage) Structures	36
2.5 Building Footprints	37
2.6 Aerial Imagery	37
2.7 Rainfall Data	38
2.8 Stream Gauge Data	41
2.9 Site Inspection	43
3 COMMUNITY CONSULTATION	45
3.1 The Community Consultation Process	45
3.2 Community Questionnaire	45
3.3 Public Exhibition of Draft Flood Study and Community Response	47

**SOMERSBY AND KARIONG CATCHMENTS
OVERLAND FLOW FLOOD STUDY**



4	MODEL DEVELOPMENT	51
4.1	Modelling Methodology	51
4.2	Model Domain	52
4.3	Topography	52
4.4	Hydraulic Roughness	52
4.5	Rainfall Data	54
4.6	Rainfall Subcatchments	54
4.7	Initial and Continuing Infiltration Model Parameters	54
4.8	Representation of Fences and Buildings	57
4.9	Representation of Bridges	57
4.10	Stormwater Drainage Network	57
4.11	Structure Blockage	57
4.12	Upstream Boundary	60
4.13	Downstream Boundary	60
5	MODEL CALIBRATION AND VALIDATION	62
5.1	Selection of Calibration and Validation Events	62
5.2	Historical Rainfall and Calibration/Validation Procedure	62
5.3	Rainfall Data	62
5.3.1	Spatial Distribution	62
5.3.2	Temporal Patterns	71
5.3.3	Intensity-Frequency-Duration Comparison to Historic Event Rainfall	75
5.3.4	Rainfall Losses	78
5.4	Calibration/Validation Data	79
5.5	Calibration/Validation Results	82
5.5.1	June 2007 Model Calibration	82
5.5.2	November 2011 Model Calibration	85
5.5.3	March 2021 Model Validation	88
5.5.4	March 2022 Model Validation	91
5.6	Calibration Summary	97
6	DESIGN MODELLING APPROACH	99
6.1	Adopted Design Event Modelling Parameters	99
6.1.1	Aerial Reduction Factors	99
6.1.2	Temporal Patterns	99
6.1.3	Rainfall Losses	99
6.1.4	Design Rainfall Depth	100
6.2	Probable Maximum Flood	101
6.3	Critical Duration Assessment	101
6.4	Climate Change Assessment	102
7	DESIGN MODELLING RESULTS	108
7.1	Peak Flood Conditions	108
7.2	Flood Mapping	111

**SOMERSBY AND KARIONG CATCHMENTS
OVERLAND FLOW FLOOD STUDY**



7.2.1	Result Filtering	111
7.2.2	Flood Hazard	111
7.2.3	Flood Function	112
7.2.4	Flood Emergency Response Classification of Communities	113
8	MODEL SENSITIVITY ASSESSMENT	116
8.1	Blockage of Hydraulic Structures	116
8.2	Hydraulic Roughness	116
8.3	Initial and Continuing Losses Through Soils Layer	117
8.4	Sensitivity Assessment Summary	117
9	MODEL VERIFICATION	120
9.1	RORB Model Configuration	120
9.2	Result Comparison	121
10	FLOODPLAIN MANAGEMENT PLANNING	125
10.1	Flood Planning Area	125
10.2	Emergency Management Activities	130
10.3	Assessment of Cumulative Impacts of Development	133
10.4	Road Inundation Analysis	136
10.4.1	Road Hazard Analysis	136
10.4.2	Road Cutoff Analysis	136
10.4.3	Duration of Inundation Analysis	136
10.4.4	Road Hazard and Flood Emergency Response Classification Summary Analysis	139
11	ASSUMPTIONS AND LIMITATIONS	144
12	CONCLUSIONS	145
13	REFERENCES	146

APPENDIX A: COMMUNITY CONSULTATION MATERIALS

APPENDIX B: CALIBRATION FIGURES

APPENDIX C: DESIGN EVENT FIGURES

APPENDIX D: SENSITIVITY FIGURES

APPENDIX E: FERC FIGURES



List of Figures

Figure 1-1: Steps of the Floodplain Management Process (extracted from Figure 2 of the Flood Risk Management Manual, 2023)	20
Figure 1-2: Regionally Significant Growth Areas	22
Figure 1-3: Study Area Locality	23
Figure 1-4: Catchment Topography and Tributaries	24
Figure 2-1: Location of Basin A and Basin B Reviewed in the Kariong Trunk Drainage Review (1985)	25
Figure 2-2: Map of Catchment Local to the Study Area - Extracted from the Kariong Trunk Drainage Review Report (Willing and Partners Consulting Engineers, 1985)	26
Figure 2-3: Location of the Northern Kariong Basin System - Extracted from Kariong Northern Basin System Report (Nichols, Watts and Associates Pty. Ltd., 1987) and Annotated in Red	28
Figure 2-4: Map of the Proposed Detention Basin Locations - Extracted from the South Somersby Trunk Drainage Study Report (Kinhill Engineers Pty Ltd, 1990)	29
Figure 2-5: Variance Between PSMs and Topographic Datasets	32
Figure 2-6: Longitudinal Section of CCC LiDAR and ELVIS LiDAR at Piles Creek, Somersby	33
Figure 2-7: Longitudinal Section of CCC LiDAR and ELVIS LiDAR at Peppermint Park, Kariong	34
Figure 2-8: Longitudinal Section of CCC LiDAR and ELVIS LiDAR at Kariong Oval, Kariong	35
Figure 2-9: Spatial Distribution of Rainfall Gauges	42
Figure 2-10: Example of Raised Grated Letter Box Pit Inlet at Detention Basin on Langford Drive near Arunta Avenue	43
Figure 2-11: Grated Inlet at Detention Basin on Langford Drive near Arunta Avenue	44
Figure 2-12: Cross-Drainage Structure along Somersby Fall Road at Piles Creek	44
Figure 3-1: Examples of Photographic Evidence of Flooding Provided by Residents	46
Figure 3-2: Summary of Types of Flooding Experienced	47
Figure 3-3: Spatial Distribution of Community Consultation Responses Across the Study Area	49
Figure 3-4: Questionnaire Responses – Spatial Distribution of Nature of Flooding Experienced	50
Figure 4-1: Land Use Categorisation	53
Figure 4-2: Rainfall Subcatchments	56
Figure 4-3: Hydraulic Model Schematisation	61
Figure 5-1: Spatial Distribution of Total Event Rainfall Depths – June 2007	64
Figure 5-2: Spatial Distribution of Total Event Rainfall Depths – November 2011	66
Figure 5-3: Spatial Distribution of Total Event Rainfall Depths – March 2021	68
Figure 5-4: Spatial Distribution of Total Event Rainfall Depths – March 2022	70
Figure 5-5: Temporal Pattern Allocation of Pluviograph to Subcatchments – June 2007, November 2011 and March 2021	72
Figure 5-6: Temporal Pattern Allocation of Pluviograph to Subcatchments – March 2022	73
Figure 5-7: Recorded June 2007 – Sub-Hourly Rainfall Data	74
Figure 5-8: Recorded November 2011 – Sub-Hourly Rainfall Data	74
Figure 5-9: Recorded March 2021 – Sub-Hourly Rainfall Data	75
Figure 5-10: Recorded March 2022 – Sub-Hourly Rainfall Data	75
Figure 5-11: IFD Chart June 2007	76
Figure 5-12: IFD Chart November 2011	77
Figure 5-13: IFD Chart March 2021	77
Figure 5-14: IFD Chart March 2022	78
Figure 5-15: Calibration Points with Provided Peak Flood Levels	81
Figure 5-16: Calibration Event – June 2007 Observed Levels Minus Simulated Levels	84
Figure 5-17: Calibration Event – November 2011 Observed Levels Minus Simulated Levels	87

**SOMERSBY AND KARIONG CATCHMENTS
 OVERLAND FLOW FLOOD STUDY**



Figure 5-18: Validation Event – March 2021 Observed Levels Minus Simulated Levels	90
Figure 5-19: Validation Event – March 2022 Observed Levels Minus Simulated Levels	93
Figure 5-20: Peppermint Park – March 2022 – Photo Provided by Marcelo Rossignolli During the Community Consultation Stage	94
Figure 5-21: Peppermint Park – March 2022 – Video Still Provided by Marcelo Rossignolli During the Community Consultation Stage	95
Figure 5-22: Peppermint Park Flood Extent – March 2022	96
Figure 5-23: Difference between Observed and Simulated Peak Flood Levels for the Calibration and Validation Events	97
Figure 5-24: Properties Indicated to be Flood Free in Community Consultation for the Calibration and Validation Events	98
Figure 6-1: Difference in Peak Flood Level – 1 in 200 AEP Design Event Minus 1 in 100 AEP Design Event	105
Figure 6-2: Difference in Peak Flood Level – 1 in 500 AEP Design Event Minus 1 in 100 AEP Design Event	106
Figure 6-3: 1 in 100 AEP, 1 in 200 AEP and 1 in 500 AEP Flood Extent Comparison	107
Figure 7-1: Key Locations	110
Figure 7-2: General Flood Hazard Vulnerability Curves (ADR, 2017)	112
Figure 7-3: Flow Chart for Determining Flood Emergency Response Classifications	114
Figure 9-1: RORB Model GIS Representation	122
Figure 9-2: TUFLOW and RORB Flow Hydrograph at DSKS_40	123
Figure 9-3: TUFLOW and RORB Flow Hydrograph at DSKS_41	123
Figure 9-4: TUFLOW and RORB Flow Hydrograph at DSKS_20	123
Figure 9-5: TUFLOW and RORB Flow Hydrograph at DSKS_18	123
Figure 9-6: TUFLOW and RORB Flow Hydrograph at DSKS_46	123
Figure 9-7: TUFLOW and RORB Flow Hydrograph at DSKS_04	123
Figure 10-1: Flood Planning Level – Kariong Town	127
Figure 10-2: Flood Planning Level – Somersby Industrial Area	128
Figure 10-3: Flood Planning Level – Northern Catchment	129
Figure 10-4: Essential Community Facilities Locations	132
Figure 10-5: Difference in Peak Flood Level - Industrial Area Future Development Minus Design 1 in 200 AEP	134
Figure 10-6: Difference in Peak Flood Level - Kariong Town Future Development Minus Design 1 in 200 AEP	135
Figure 10-7: Road Hazard Analysis	137
Figure 10-8: Road Cutoff Analysis	138



List of Tables

Table 2-1 - Summary of the LiDAR Provided by CCC and 1m LiDAR Available on ELVIS	31
Table 2-2: Summary of Available GIS Data and its Intended Application	36
Table 2-3: Summary of Drainage Structure Data Provided. Percentage (%) of the total number of assets in the dataset that have complete asset information is shown.	37
Table 2-4: Summary of Observed Changes to the Catchment from Aerial Imagery Provided by CCC	38
Table 2-5: Summary of Daily Rainfall Gauges within a 15 km Radius of the Study Area	39
Table 2-6: Summary of Pluvio Rainfall Gauges	41
Table 3-1: Residence Length Count	46
Table 3-2: Number of Responses that Provided Suitable Information for the Purposes of Model Result Calibration for Specific Events	46
Table 4-1: Land Use Categorisation	52
Table 4-2: Applied Impervious Ratios per Land Use Category	54
Table 4-3: Adjustment of a Medium Debris Potential Classification for AEP	58
Table 4-4: Blockage Associated with Cross-Drainage Structure Debris Potential Classification and Control Dimension	58
Table 4-5: ARR 2019 Book 6 - Table 6.6.1. Debris Availability - in Source Area of a Particular Type/Size of Debris	58
Table 4-6: ARR 2019 Book 6 - Table 6.6.2. Debris Mobility - Ability of a Particular Type/Size of Debris to be Moved into Streams	59
Table 4-7: ARR 2019 Book 6 - Table 6.6.3. Debris Transportability - Ability of a Stream to Transport Debris Down to the Structure	59
Table 4-8: Stormwater Drainage Inlet Pit Blockage	59
Table 5-1: Calibration Events	62
Table 5-2: Event Total Rainfall - 7/06/2007 0:00 - 10/06/2007 0:00	63
Table 5-3: Event Total Rainfall – 24/11/2011 0:00 – 27/11/2011 0:00	65
Table 5-4: Event Total Rainfall – 19/03/2021 0:00 – 22/03/2021 0:00	67
Table 5-5: Event Total Rainfall 1/03/2022 0:00 – 4/03/2022 0:00	69
Table 5-6: Number of Subcatchments Designated to Pluviograph Generated Temporal Pattern – June 2007, November 2011 and March 2021	71
Table 5-7: Number of Subcatchments Designated to Pluviograph Generated Temporal Pattern – March 2022	71
Table 5-8: Historic Event Comparison to Design Rainfall Depth and Duration	76
Table 5-9: Adopted Loss Values for Each Land Use Category	79
Table 5-10: Community Response Certainty Definitions	79
Table 5-11: Number of Community Consultation Responses Implemented in Calibration/Validation	80
Table 5-12: The Confidence in Observed Peak Flood Level of the Community Consultation Responses Implemented in Calibration/Validation	80
Table 5-13: June 2007 Calibration Event Peak Flood Level Comparison	82
Table 5-14: June 2007 Calibration Event Comparison of Community Consultation Observed Peak Flood Levels with Simulated Levels	83
Table 5-15: November 2011 Calibration Event Peak Flood Level Comparison	85
Table 5-16: November 2011 Calibration Event Comparison of Community Consultation Observed Peak Flood Levels with Simulated Levels	86
Table 5-17: March 2021 Validation Event Peak Flood Level Comparison	88

**SOMERSBY AND KARIONG CATCHMENTS
OVERLAND FLOW FLOOD STUDY**



Table 5-18: March 2021 Validation Event Comparison of Community Consultation Observed Peak Flood Levels with Simulated Levels	89
Table 5-19: March 2022 Validation Event Peak Flood Level Comparison	91
Table 5-20: March 2022 Validation Event Comparison of Community Consultation Observed Peak Flood Levels with Simulated Levels	92
Table 5-21: Comparison of Community Consultation Observed Peak Flood Levels with Simulated Levels for the Calibration and Validation Events	98
Table 6-1: Adopted PNBIL	100
Table 6-2: Adopted Design Rainfall Depths (mm)	100
Table 6-3: Adopted GSDM Parameters	101
Table 6-4: Adopted GSDM Rainfall Intensities	101
Table 6-5: Adopted Critical Durations	102
Table 6-6: Climate Change Rainfall Scaling Factors for 90-minute Critical Duration	103
Table 6-7: Climate Change Scenario Rainfall Increases	103
Table 7-1: Peak Flood Level and Depths at Key Locations	108
Table 7-2: Flood Function Definition Parameters	113
Table 7-3: Flood Emergency Response Classifications	113
Table 8-1: Change in Peak Flood Level at Key Locations	118
Table 9-1: Subcatchment K_c Calculation	120
Table 9-2: 1 in 100 AEP TUFLOW and RORB Peak Flow and Time of Peak	124
Table 9-3: 5% AEP TUFLOW and RORB Peak Flow and Time of Peak	124
Table 10-1: Flood Affection of Essential Community Facilities	130
Table 10-2: 2021 Census Data Correlated to Vulnerability in Communities	131
Table 10-3: FERC Regions and their Critical Access and Evacuation Summary	139
Table 11-1: Model Limitations	144



List of Acronyms

AEP	Annual Exceedance Probability
AHD	Australian Height Datum
ARI	Average Recurrence Interval
ARR	Australian Rainfall and Runoff
BOM	Bureau of Meteorology
DCP	Development Control Plan
DEM	Digital Elevation Model
DCCEEW	Department of Climate Change, Energy, the Environment and Water
CCC	Central Coast Council
FPA	Flood Planning Area
FRM	Flood Risk Management
GCC	Gosford City Council
GIS	Geographic Information System
LEP	Local Environmental Plan
LIDAR	Light Detection and Ranging
LGA	Local Government Area
PMF	Probable Maximum Flood
PMP	Probable Maximum Precipitation
RoG	Rainfall on Grid
TUFLOW	Two-Dimensional Unsteady Flow



Glossary

Terms and definitions as provided and/or interpreted from the NSW Flood Risk Management Manual 2023.

Term	Abbreviation	Definition
Annual Exceedance Probability	AEP	The chance of a flood of a given or larger size occurring in any one year, usually expressed as a percentage.
Australian Height Datum	AHD	A common national surface level datum often used as a referenced level for ground, floor and flood levels.
Average recurrence interval	ARI	The long-term average number of years between the occurrence of a flood equal to or larger in size than the selected event.
Defined flood event	DFE	The flood event selected as a general standard for the management of flooding to development.
Development Control Plan	DCP	The DCP provides detailed planning and design guidelines to support the planning controls in the Local Environmental Plan (LEP) and is prepared and adopted by Councils.
Flood		A natural phenomenon that occurs when water covers land that is normally dry. It may result from coastal inundation (excluding tsunamis) or catchment flooding, or a combination of both.
Flood (hydrologic and hydraulic) modelling		Hydrologic and hydraulic computer models to simulate catchment processes of rainfall, runoff, stream flow and distribution of flows across the floodplain or similar.
Flood Awareness		An appreciation of the likely effects of flooding, and a knowledge of the relevant flood warning, response and evacuation procedures facilitating prompt and effective community response to a flood threat.
Flood Constraints		Key constraints that flooding places on land.
Flood Damage		The tangible (direct and indirect) and intangible costs (financial, opportunity costs, clean-up) of flooding.
Flood Evacuation		The movement of people from a place of danger to a place of relative safety, and their eventual return.
Flood Impact and Risk Assessment	FIRA	A study to assess flood behaviour, constraints and risk, understand off-site flood impacts on property and the community resulting from the development, and flood risks to the development and its users.
Flood Plan (local or state)	Local (LFP)	A subplan of an Emergency Management plan that deals specifically with flooding; they can exist at state, zone and local levels.

**SOMERSBY AND KARIONG CATCHMENTS
OVERLAND FLOW FLOOD STUDY**



Term	Abbreviation	Definition
Flood Planning Level	FPL	The combination of the flood level from the DFE and freeboard selected for FRM purposes.
Flood Prone Land		Land susceptible to flooding by the PMF event.
Flood Risk		Risk is based on the consideration of the consequences of the full range of flood behaviour on communities and their social settings, and the natural and built environment.
Flood Risk Management	FRM	The management of flood risk to communities.
Flood Risk Management Manual	FRMM	Guidance manual for the practice of Floodplain Risk Management within NSW that supports the delivery of the Flood Prone Land Policy through the Floodplain Management Program.
Flood Storage Areas		Areas of the floodplain that are outside floodways which generally provide for temporary storage of floodwaters during the passage of a flood and where flood behaviour is sensitive to changes that impact on temporary storage of water during a flood.
Flood Study		A comprehensive technical investigation of flood behaviour undertaken in accordance with the principles in the Flood Risk Management Manual and consistent with associated guidelines. A flood study defines the nature of flood behaviour and hazard across the floodplain by providing information on the extent, level and velocity of floodwaters, and on the distribution of flood flows considering the full range of flood events up to and including extreme events, such as the PMF.
Flood Warnings		Warnings issued when there is more certainty that flooding is expected, are more targeted and are issued for specific catchments.
Floodplain		Equivalent to flood prone land.
Floodways		Areas of the floodplain which generally convey a significant discharge of water during floods and are sensitive to changes that impact flow conveyance. They often align with naturally defined channels.
Flow		The rate of flow of water measured in volume per unit time; for example, cubic metres per second (m ³ /s).
Freeboard		A factor of safety typically used in relation to the setting of minimum floor levels or levee crest levels.
Frequency		The measure of likelihood expressed as the number of occurrences of a specified event in a given time.
FRM Measures		Measures that can reduce flood risk.
FRM Options		The FRM measures that might be feasible for the management of a particular area of the floodplain.

**SOMERSBY AND KARIONG CATCHMENTS
OVERLAND FLOW FLOOD STUDY**



Term	Abbreviation	Definition
FRM Plan		A management plan developed in accordance with the principles in the Flood Risk Management Manual and its supporting guidelines.
FRM Study		A management study developed in accordance with the principles in the Flood Risk Management Manual and its supporting guidelines.
Future Flood Risk		The risk future development and its users are exposed to as a result of its location on the floodplain.
Hazard		A source of potential harm or conditions that may result in loss of life, injury and economic loss due to flooding.
Hydraulics		The study of water flow in waterways and flow paths; in particular, the evaluation of flow parameters such as water level and velocity.
Hydrology		The study of the rainfall and runoff process; in particular, the evaluation of peak flows, flow volumes and the derivation of hydrographs for a range of floods.
Likelihood of Occurrence		The likelihood that a specified event will occur.
Local Environment Plan	LEP	LEP's guide planning decisions for local government areas.
NSW Floodplain Management Program	The Program	The NSW Government's program of technical support and financial assistance to local councils to enable them to understand and manage their flood risk.
Prevention, preparedness, response and recovery		Involves: <ul style="list-style-type: none"> • prevention: to eliminate or reduce the level of the risk or severity of emergencies • preparedness: enhances the capacity of agencies and communities to cope with the consequences of emergencies • response: to ensure the immediate consequences of emergencies to communities are minimised • recovery: measures that support individuals and communities affected by emergencies in the reconstruction of physical infrastructure and restoration of physical, emotional, environmental and economic wellbeing.
Probability		A statistical measure of the expected chance of a flood.
Rainfall Intensity		The rate at which rain falls, typically measured in millimetres per hour (mm/h).
Residual Flood Risk		The risk to the existing and future community that remains with FRM, EM and land-use planning measures in place to address flood risk.
Risk		'The effect of uncertainty on objectives' (ISO 2018).

**SOMERSBY AND KARIONG CATCHMENTS
OVERLAND FLOW FLOOD STUDY**



Term	Abbreviation	Definition
Runoff		The amount of rainfall that ends up as streamflow, also known as rainfall excess.
State Environmental Planning Policy	SEPP	Policies which guide planning for what development can occur on specific land in a state-wide context.
Scenario		A scenario may relate to current, historical or assumed future floodplain, catchment and climate conditions.
Velocity		The speed and direction of floodwaters, measured in metres per second (m/s).



Executive Summary

Central Coast Council (CCC) commissioned Kellogg Brown & Root (KBR) to undertake a comprehensive flood study for the Somersby and Kariong catchments. The primary objective of this study was to develop hydrologic and hydraulic models to assess flood risk across past, existing, and future catchment conditions. This report details flood modelling methodologies and mapping undertaken in line with industry standards. The approach to this study is in line with the Australian Rainfall and Runoff (ARR) Version 4.1 guideline, also known as Australian Rainfall and Runoff 2019. It is noted that the ARR 4.2 guideline was released during the flood study program however the design event modelling was completed prior to its release. This study fulfills the objectives of the Flood Study phase of the New South Wales Government's Floodplain Management Process and provides a basis for future flood risk management processes.

As a part of this study, community consultation was undertaken providing multi-path communication between CCC, KBR, NSW State Government, State Emergency Services as well as the community. The community consultation included media releases, a project-specific website, community questionnaires, letters regarding the Flood Planning Area, Public Exhibition and a community drop-in session (the latter two elements are yet to be completed).

In conjunction with a detailed data review, KBR incorporated outcomes from community consultation to ensure the adopted modelling methodology reflected the needs and experiences of the local community. A combined hydrologic and hydraulic model was developed for the study area using the TUFLOW software suite, tailored to address the specific characteristics of the Somersby and Kariong catchments.

Hydrologic and hydraulic model calibration and validation were performed using historical flood events and community consultation data to ensure accuracy and reliability. Design flood events (20%, 10%, 5%, 2%, 1 in 100, 1 in 200 and 1 in 500 Annual Exceedance Probability (AEP) events) were simulated across multiple scenarios, including past, existing, and future catchment conditions, in accordance with the ARR 2019 guidelines. Additionally, the Probable Maximum Flood (PMF) event was modelled to assess extreme flood risks.

Sensitivity analyses were conducted on key model parameters to identify their influence on flood behaviour, while climate change assessments were undertaken to evaluate the potential impacts of increased rainfall intensities and future development within the catchment. A Flood Emergency Response Classification (FERC) assessment was also completed to identify areas requiring targeted emergency response measures.

The study further included the simulation and analysis of a future development scenario to assess the cumulative impacts of ongoing development within the catchments. These results provide a platform to guide CCC in flood risk management, future planning, and emergency response strategies.

The study has identified flooding associated with overland flow to be the dominant flooding mechanism within the study area. The relatively short catchment critical duration coupled with the rapid response times of the catchments suggest that the study area is at most risk to short duration and high intensity rainfall events. Overall, Somersby and Kariong is a relatively low risk catchment, with flooding generally constrained to flood storage basins and waterways. However, outcomes of the study have demonstrated that the study area is sensitive to stormwater infrastructure blockages. These impacts are further exacerbated with the increased rainfall intensities associated with the future changing climate.

The key recommendations/outcomes of the study are as follows:

**SOMERSBY AND KARIONG CATCHMENTS
OVERLAND FLOW FLOOD STUDY**



- **Integration of Study Outputs into Future Planning:** The outputs of this study are to inform subsequent Floodplain Risk Management Studies (FRMS) and guide CCC's planning policies, including the review of Flood Planning Levels (FPL) and Flood Planning Areas (FPA).
- **Refinement of Emergency Response Planning:** The detailed information on flood behaviour can be used for further collaboration with emergency services to refine emergency response strategies. This includes improving transparency and enhancing local evacuation planning and flood warning systems.
- **Future Climate Change Modelling:** Climate change assessments can readily be updated to new guidelines and rainfall projections. This will ensure flood models remain current and reflect best practices in assessing projected climate impacts.
- **Assessment of Future Development Scenarios:** The impacts of future development scenarios on flood behaviour provides CCC with insight into the cumulative impacts of ongoing development and to support sustainable planning decisions.

This study provides CCC with reliable hydrologic and hydraulic modelling outputs to guide flood risk management initiatives, future planning strategies, and emergency preparedness efforts within the Somersby and Kariong catchments. The findings further enable CCC to make informed, evidence-based decisions to reduce the risks and impacts of flooding on the local community.



1 Introduction

The Somersby and Kariong Catchments Overland Flood Study was prepared for Central Coast Council (CCC). The study area forms part of the Central Coast Local Government Area (LGA), located 50 km north of Sydney. The Somersby and Kariong catchments cover an area of approximately 66.5 km² and primarily drain west towards the Hawkesbury River with a small area draining east to Brisbane Waters.

A ridgeline traverses through the study area to which a majority of development (residential and industrial) sits in close proximity. As such, the catchments experience overland flooding caused by short and intense rainfall events. CCC has previously developed flood models and undertaken drainage assessments across the catchments, however there is a lack of flood information to provide an in-depth understanding of the existing flood behaviour across the study area. In addition, a portion of the study area has been identified as a 'regionally significant growth area' as part of the Central Coast Regional Plan 2041 (DPE, 2022), highlighting the need to define the existing overland flooding behaviour to support planning procedures.

CCC engaged KBR to undertake the Somersby and Kariong Catchments Overland Flood Study to define the existing and future overland flooding across the study area. This in-depth understanding of flooding behaviour will, in turn, facilitate more effective flood risk management within the study area. This study, including the models developed, will be used in the assessment of development applications, provide information to emergency services, drainage assessments and other future planning decisions.

This study has been completed as a part of the NSW Government Floodplain Management Program, and has been funded by CCC, with both financial and technical support from the NSW Department Climate Change, Energy, Environment and Water (DCCEEW).

1.1 THE FLOODPLAIN MANAGEMENT PROCESS

As detailed in the NSW Flood Risk Management Manual (2023) (herein referred to as the Manual), the primary objective of the NSW Governments Flood Prone Land Policy is to reduce the impact of flooding and flood liability to landowners and occupiers of the floodplain and reduce the damages and losses resulting from floods. As with local land use planning processes, the responsibility for the management of flood liable land rests with local government/councils with support from DCCEEW.

The Manual defines the NSW Floodplain Management Process which includes five sequential steps as detailed in **Figure 1-1**. This study constitutes the 'Flood Study' step of the process and has been undertaken to define the existing flood risk and provide the basis for the planning studies in later steps.

While the Floodplain Management Process has been undertaken in various forms within the catchments, the purpose of this study is to revise the understanding of flooding in line with best practice methods and the changing nature of the catchments to enable a review of the floodplain risk management plan and associated options for the catchments in their entirety.

SOMERSBY AND KARIONG CATCHMENTS
OVERLAND FLOW FLOOD STUDY

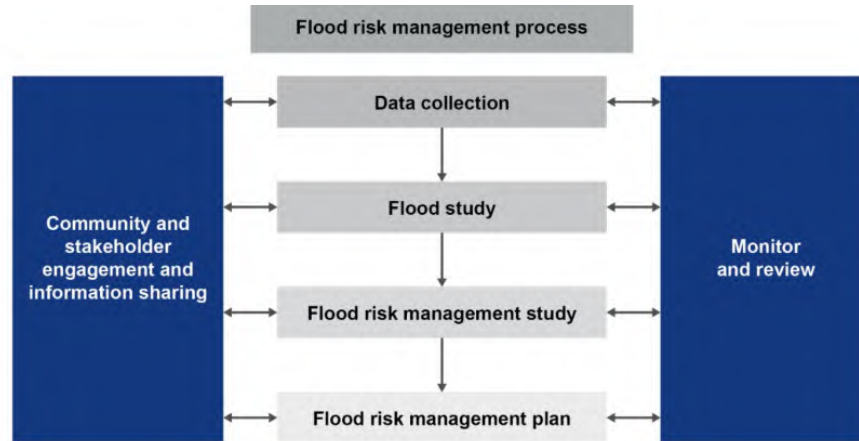


Figure 1-1: Steps of the Floodplain Management Process (extracted from Figure 2 of the Flood Risk Management Manual, 2023)

1.2 STUDY OBJECTIVES

The primary objective of this Flood Study is to define the flood behaviour under historical, existing and future conditions (including potential impacts of climate change) in the Somersby and Kariong study area, for a full range of design flood events. The study will provide information on flood levels, depths, velocities, flows, hydraulic categories and provisional hazard categories. Specifically, the study incorporates:

- Compilation and review of existing information relevant to the study and acquisition of additional data including survey as required.
- A community consultation and participation program to:
 - Identify local flooding concerns.
 - Collect information on historical flood behaviour.
 - Advise on the outcomes of the flood study and flood behaviour predictions.
 - Engage the community in the on-going floodplain management process.
- Development and calibration of suitable hydrological and hydraulic models.
- Determination of design flood conditions for a range of design events, including the 20%, 10%, 5%, 2%, 1 in 100, 1 in 200 and 1 in 500 Annual Exceedance Probability (AEP) events, and the Probable Maximum Flood (PMF).
- Assessment of the potential impact of climate change on the 1 in 100 AEP design flood event.
- The models and results produced in this study are intended to:
 - Outline the flood behaviour within the study area to aid in CCC’s management of flood risk.
 - Form the basis for a subsequent floodplain risk management study, where detailed assessment of flood mitigation options and floodplain risk management measures will be undertaken.

1.3 REPORT STRUCTURE

This study is structured as follows:



**SOMERSBY AND KARIONG CATCHMENTS
OVERLAND FLOW FLOOD STUDY**



- Section 1 – Introduction to the report and its purpose in the Floodplain Management Process.
- Section 2 – Summary of available data.
- Section 3 – Community consultation.
- Section 4 – Summary of hydrological and hydraulic model development.
- Section 5 – Model calibration and validation.
- Section 6 – Design modelling approach.
- Section 7 – Design modelling results.
- Section 8 – Model sensitivity assessment.
- Section 9 – Model verification
- Section 10 – Floodplain management planning
- Section 11 – Conclusions
- Section 12 – References.

1.4 STUDY AREA DESCRIPTION

The study area contains the suburbs of Somersby and Kariong as shown in **Figure 1-3**, and forms a part of the Mooney Mooney Creek catchment. The study area is comprised of several overland subcatchments that contribute flows to a number of major tributaries in the area, including Little Mooney Mooney Creek, Robinson Creek, Floods Creek, Piles Creek and Mooney Mooney Creek itself. The study area also contains a small section of the upper Narara Creek catchment that drains to Brisbane Water. The study area covers approximately 66.5 km².

The study area is divided by a natural ridgeline between the Piles Creek and Floods Creek subcatchments. The Central Coast Highway and the Pacific Motorway also cut across the Kariong upper catchment, acting as major hydraulic controls.

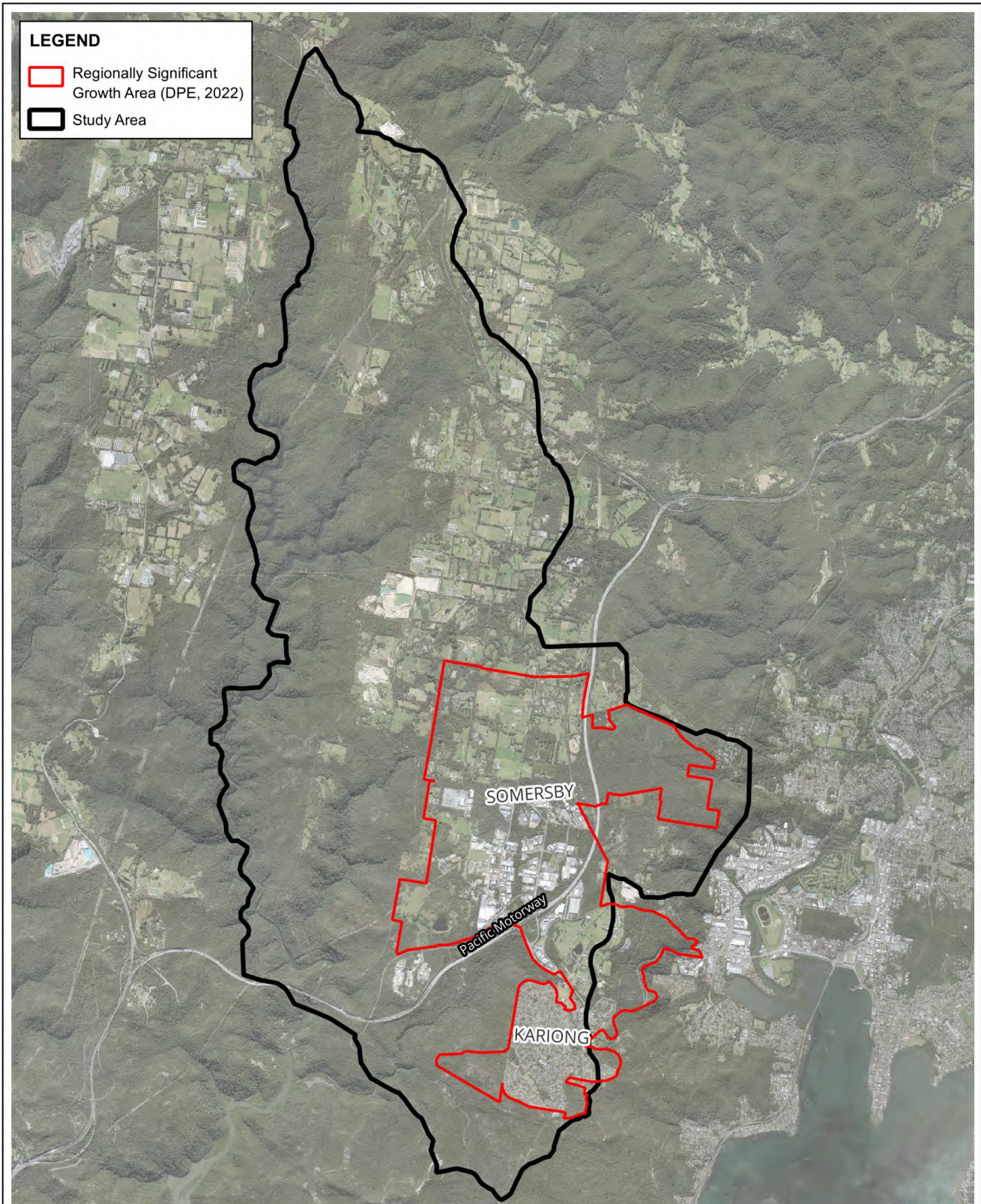
Figure 1-4 shows the study area topography and the tributaries local to the area. The study area extent follows a major ridgeline along the eastern boundary, with the highest point located in the north near the intersection of Peats Ridge Road and Wisemans Ferry Road at 309 m AHD. The topography generally grades south-west toward Mooney Mooney Creek in Brisbane Water National Park, which ultimately drains to Broken Bay via the Hawkesbury River. Most of the development is located within the relatively flat upper catchment. The topography quickly descends from the flat upper catchment into heavily vegetated bushland with steep incised valleys.

The Kariong study area is primarily characterised by residential land use in the upper catchment. This is interspersed with some commercial properties and educational institutions including Kariong Public School, Kariong Mountains High School and Ngaruki Gulgul Central School.

There are several green spaces, some of which also serve as flood storage basins. These basins include Peppermint Park and Kariong Oval which are previous flood mitigation works.

The upper catchment in the Somersby study area is primarily characterised by a developed industrial precinct in the south and primary production land use with large open green spaces in the north. Heavily vegetated trunk drainage channels are interspersed throughout the industrial precinct which convey flows to Piles Creek, which then flow under the Pacific Motorway to Mooney Mooney Creek.

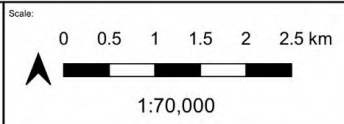
The study area contains regionally significant growth areas as identified in the Central Coast Regional Plan 2041 (DPE, 2022). These are generally located in the developed upper reaches of the catchment, spanning from the Kariong residential precinct through to the Somersby Industrial and Primary Production areas further north. The extent of the regionally significant growth areas relevant to the study area is presented in **Figure 1-2**.

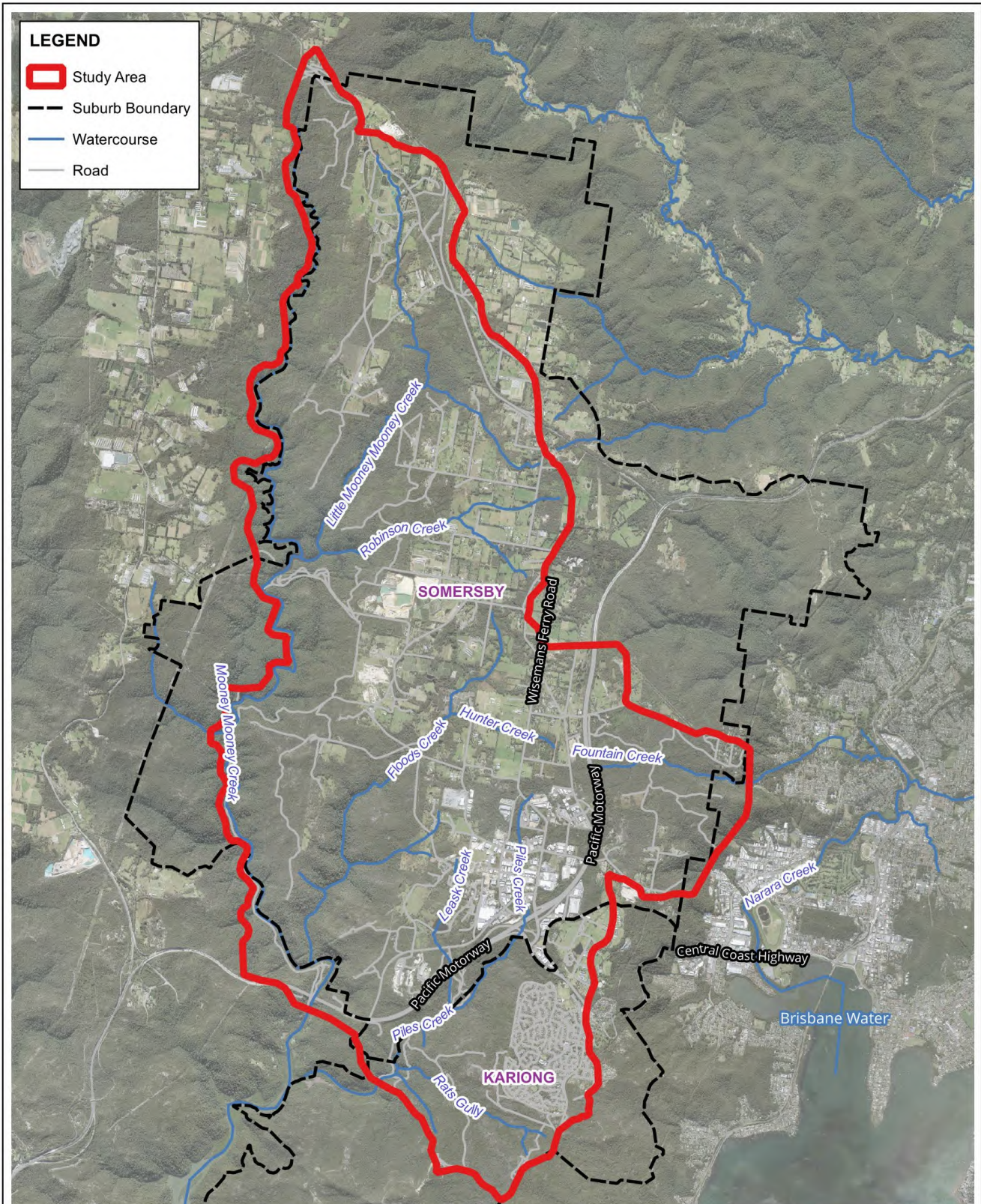


Title: **Regionally Significant Growth Areas**

Figure:	1-2	Rev:	0
---------	-----	------	---

Scale at A4 1:70,000
© Kellogg Brown & Root Pty Ltd, Produced 2025-03-04T11:33:48.852 by K140797
Data © Department of Finance, Services and Innovation 2019, TINSW 2019, © State Government of NSW and Department of Planning and Environment (DPE) 2019, © Office of Environment and Heritage 2019, © Bureau of Meteorology 2019 all accessed under a Creative Commons 3.0 Australia licence. Full terms at <https://creativecommons.org/licenses/by/3.0/au/legalcode>
While effort has been made to ensure the accuracy and completeness of the information presented, no guarantee is given, nor responsibility taken by KBR for any errors or omission.
File: \\perfile001\data3\Water_Resources\Projects\SEW353_Kariong_Somersby_Flood_Study\GIS\Workspaces\Stage_Final_Draft\MS_Figures.gxz

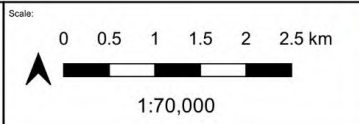




Title: **Study Area Locality**

Figure:	1-3	Rev:	0
---------	-----	------	---

Scale at A4 1:70000
© Kellogg Brown & Root Pty Ltd, Produced 2025-05-14T10:28:41.703 by K140797
Data © Department of Finance, Services and Innovation 2019, TINSW 2019, © State Government of NSW and Department of Planning and Environment (DPE) 2019, © Office of Environment and Heritage 2019, © Bureau of Meteorology 2019 all accessed under a Creative Commons 3.0 Australia licence. Full terms at <https://creativecommons.org/licenses/by/3.0/au/legalcode>
While effort has been made to ensure the accuracy and completeness of the information presented, no guarantee is given, nor responsibility taken by KBR for any errors or omission.
File: \\profile001\data\Water_Resources\Projects\SEW353_Kariong_Somersby_Flood_Study\GIS\Workspaces\Stage_Final_Draft\MS_Figures.qgz





Item No: S.1
Title: Community Participation Plan - For Adoption -
Deferred from Ordinary Council Meeting 26
August 2025
Department: Performance and Communications

2 September 2025 Environment and Planning Committee

Reference: F2025/00483 - D17049149
Author: Karen Unsted, Personal Assistant to Executive Officer Performance and
Communications
Manager: Nicole Jenkins, Executive Officer Performance and Communications
Executive: David Farmer, Chief Executive Officer

Recommendation

That the Committee recommends that Council adopts the Community Participation Plan 2025-29.

Report purpose

To present the draft Community Participation Plan 2025-29 for adoption.

Executive Summary

The NSW Government requires Council to prepare a Community Participation Plan to identify how and when we will inform and engage with our community as we carry out our planning functions.

At the ordinary Council Meeting 25 March 2025, Council resolved:

636/25

That Council:

- 1 Endorses the proposed improvements to engagement planning and activities based on community feedback received during the public exhibition of the draft Community Engagement Strategy excluding the Community Participation Plan 2024-28 as per Attachment 1.*

S.1 Community Participation Plan - For Adoption - Deferred from Ordinary Council Meeting 26 August 2025 (cont'd)

- 3 *Refer the draft Community Participation Plan to the Environment & Planning Standing Committee for discussion, and exhibit separately the draft CPP (including no. submissions for policy) as part of the Place based workshops to occur before June 2025*

Following presentation at the Environment & Planning Standing Committee and public exhibition the Community Participation Plan 2025-29 is presented for adoption by Council.

Background

The *Environmental Planning and Assessment Act 1979 (EP&A Act)* requires Planning authorities, including councils and NSW agencies with key planning approval functions, to have a Community Participation Plan (CPP). CPPs set out how the planning authority will engage the public in their decision-making.

At the ordinary Council Meeting 25 March 2025, Council resolved:

636/25

That Council:

- 3 *Refer the draft Community Participation Plan to the Environment & Planning Standing Committee for discussion, and exhibit separately the draft CPP (including no. submissions for policy) as part of the Place based workshops to occur before June 2025*

Report

The Central Coast Community Participation Plan is designed to make community participation in planning matters easier and clearer for the community.

Council has a responsibility to deliver the objectives of the *Environmental Planning and Assessment Act 1979 (EP&A Act)* including the promotion of orderly and economic use of land, facilitating ecologically sustainable development and promoting social and economic wellbeing. Community participation refers to how we will engage with our community in our work under the EP&A Act.

The NSW Government requires Council to prepare a Community Participation Plan to identify how and when we will inform and engage with our community as we carry out our planning functions.

Under both the *Local Government Act 1993 (LG Act)* and the *Environmental Planning and Assessment Act 1979 (EP&A Act)* there are provisions for the Community Engagement Strategy and Community Participation Plan to be within one (1) document. A combined Community Engagement Strategy

S.1 Community Participation Plan - For Adoption - Deferred from Ordinary Council Meeting 26 August 2025 (cont'd)

Following completion of Community Consultation including Public Exhibition, the draft Community Engagement Strategy that included the Community Participation Plan 2024-28 was presented at the Ordinary Council meeting, Tuesday 10 December 2024. At this meeting Council resolved the following:

- 521/24 *That the draft Community Engagement Strategy be deferred to the February 2025 meeting for finalisation.*
- 522/24 *That the CEO conduct place-based engagement activities in each ward in the first half of 2025 and before finalisation of the Operational Plan 2025-26 and including consultation on the Local Strategic Planning Statement and Community Strategic Plan.*
- 523/24 *That a workshop is organised for Councillors prior to the February meeting.*

Following completion of the Councillor workshop on Tuesday 11 February 2025 a revised draft Community Engagement Strategy that included the Community Participation Plan 2024-28 was presented at the Ordinary Council meeting, Tuesday 25 March 2025. At this meeting Council resolved the following:

636/25

That Council:

- 1 *Endorses the proposed improvements to engagement planning and activities based on community feedback received during the public exhibition of the draft Community Engagement Strategy excluding the Community Participation Plan 2024-28 as per Attachment 1.*
- 3 *Refer the draft Community Participation Plan to the Environment & Planning Standing Committee for discussion, and exhibit separately the draft CPP (including no. submissions for policy) as part of the Place based workshops to occur before June 2025*

Stakeholder Engagement

Part One

There has been extensive consultation undertaken during the Strategy development, and with the draft version through an initial public exhibition and market research process. Engagement included activities such as face-to-face pop-ups, staff workshops, targeted market research, phone surveys as well as online surveys (hosted on Your Voice Our Coast). During the development of the Strategy, and in the engagement activities, Council sought to reach diverse communities.

S.1 Community Participation Plan - For Adoption - Deferred from Ordinary Council Meeting 26 August 2025 (cont'd)

Stage One consultation involved:

- 16 internal stakeholder meetings,
- 1,952 responses to Council’s Wellbeing Survey with specific questions in relation to engagement,
- Presentation to the Executive Leadership Team.

Stage Two public exhibition/and market research of the draft Community Engagement Strategy included:

- 234 responses to the online survey,
- 1900 people had an opportunity to engage at pop-up engagement activities such as Sustainability Future Festival and the Outdoor Movie Series,
- 402 residents undertook a 14-minute market research phone interviews.

Overall, the opportunity to engage was presented to the community on over 20,000 occasions. Approximately 1,900 community members also had the opportunity to engage in person. Over 2,600 contributions were received across both stages.

Councillors had the opportunity to provide feedback on the Strategy at an induction session on Saturday 19 October 2024 and at a Councillor workshop on Tuesday 11 February 2025.

Part Two

In accordance with the March 2025 Council resolution, The Community Participation Plan was presented as a separate document for consideration by the Environment and Planning Committee at its’ meeting 6 May 2025. No further comments were provided by the Committee.

The Community Participation Plan was placed on public exhibition for a second time 5 May – 4 June 2025. During this exhibition a dedicated project page was established. During the exhibition period there were 232 page views from 180 unique visitors. Four formal submissions were received:

Submission	Staff Response
Request for Council to bring COSTCO to the Central Coast to support increased employment and economic opportunities on the Central Coast.	<p>Council welcomes ideas that support local economic growth and job creation. Suggestions such as attracting major retailers are consistent with our broader goals to strengthen the region’s economy, support employment, and improve access to goods and services.</p> <p>While Council does not determine where private businesses choose to locate, we aim to create the right conditions for investment through strategic planning, infrastructure delivery, and engagement with industry stakeholders.</p>

Submission	Staff Response
	<p>We are currently exhibiting a draft Employment Lands Strategy, which outlines future opportunities for business and industrial growth across the Central Coast. This strategy will help guide how we plan for and support economic development in key areas.</p>
<p>Request for stronger stakeholder engagement in Coastal Management Programs and raises concern over the lack of investment in Tuggerah Lakes.</p>	<p>Council acknowledges the importance of community involvement in coastal and environmental planning. We are committed to incorporating targeted stakeholder engagement throughout the development and implementation of Coastal Management Programs (CMPs) to support transparent and inclusive planning across environmental, infrastructure, and coastal adaptation initiatives.</p> <p>We also note the concern regarding the exclusion of Tuggerah Lakes from the State Government's Maritime Infrastructure Plan 2019–2024 and will continue to advocate for appropriate recognition and investment in this area. Council invites those interested in future updates to visit the dedicated Your Voice Our Coast page to register for project updates.</p>
<p>Request for regular community forums to support genuine engagement, improved urban design, and climate resilience, with a focus on livability and responsiveness to local issues.</p>	<p>Council acknowledges the community's desire for more meaningful engagement and improved liability outcomes. In response, we have adopted a new Community Engagement Strategy (March 2025), which prioritises place-based engagement to ensure local voices are reflected in decision-making.</p> <p>With the return of elected Councillors, Council is committed to increasing opportunities for public input, including regular forums ahead of key decision making. We also continue to address concerns around climate resilience and urban design through sustainable planning and improved development standards.</p>
<p>Request for increased action and support to address visible homelessness at The Entrance, highlighting the need for compassionate and coordinated responses from Council and service providers.</p>	<p>Homelessness is not just an issue on the Central Coast, is it a national concern, and one which needs to involve all stakeholders working together.</p> <p>In NSW, the provision of homelessness services and public housing is the responsibility of the State Government. Central Coast Council works closely with relevant</p>

S.1 Community Participation Plan - For Adoption - Deferred from Ordinary Council Meeting 26 August 2025 (cont'd)

Submission	Staff Response
	<p>Departments to support operations and provide opportunities. We connect rough sleepers with health and housing services, offer transitional accommodation in underutilised assets and holidays parks, and increase the supply of community housing though the Council Affordable Housing Land Proposal. These programs are made possible through partnerships with the State Government and work is ongoing to create more pathways to meet the current and urgent need.</p> <p>In relation to illegal camping on the Coast, Council Rangers respond to reports of unlawful camping within local reserves and other public spaces. In addition to responding to complaints, Rangers may also identify individuals camping illegally during routine patrols. Where individuals are found to be experiencing genuine homelessness, they are referred to Central Coast Assertive Outreach Team. It is important to note that Council Rangers do not have the authority to forcibly relocate individuals; this responsibility lies with the NSW Police who have the power to respond to any breaches of the peace or criminal activity.</p>

Financial Considerations

Financial Year (FY) Implications.

The proposal has cost financial implications for the current FY and outer years in the LTFP.

Budget and Long-Term Financial Plan (LTFP) Impact.

The FY adopted budget includes the impact for this proposal.

Link to Community Strategic Plan

Our Leadership

The systems, processes and partnerships that ensure genuine community participation, financial stewardship and excellent service deliver to our community.

Goal

LE2: Inclusive and sound decision making to guide the Central Coast into a bright future.

Strategy

LE2.1: Engage and communicate openly and honestly with the community and provide accessible opportunities for the community to be involved and participate in discussions.

Risk Management



If the draft Strategy is not adopted, Council may fail to meet legislative requirements under the *Local Government Act* and the *EP&A Act*, that:

- The Strategy must be reviewed within 3 months of the Local Government elections,
- Consistent with *clause 2.24(1)* of the *Environmental Planning and Assessment Act 1979*, once Council has endorsed the Community Participation Plan, it will be published on the NSW Planning Portal.

Critical Dates or Timeframes

Nil.

Attachments

1   Community Participation Plan 2025 D16965081

